

FILMING MANAGEMENT PLAN

Sydney Olympic Park Authority P5

Production Details:

Working Title: 'The Fall Guy'

Company Entity: K25 Productions Pty Ltd

ABN: 22 658 318 935

Address: 29 Baywater Drive

Wentworth Point, NSW, 2127

Filming period: 5th October, 2022 - 17th March, 2023 (filming days TBC)

Executive Producer: Cecil O'Connor

Unit Production Manager: Anne Bruning - 0418 644 557

Supervising Location Manager: Phillip Roope - 0418 863 984

Production Description:

In a media release on the 17 May 2022, it was announced that as a result of location incentives offered by both the Federal and NSW State Governments, filming will take place in Sydney and New South Wales for The Fall Guy, a Universal Studios feature film. The Fall Guy is supported by Create NSW/Made in NSW fund which attracts significant international screen projects to NSW. For those who have not seen the release, the production is expected to inject more than \$244 million into the Australian economy supporting local businesses as they continue to rebound from the pandemic. In addition, over 1000 Australian cast and crew and more than 3000 extras will be employed on the film between June of this year and March 2023. Ryan Gosling will play the lead. Filming of The Fall Guy will commence in mid-October this year and finish in 17th March, 2023. The director is American filmmaker David Leitch a former actor, stunt performer and stunt coordinator. Unlike most international films that shoot here, The Fall Guy is filming Sydney as Sydney, with the city's iconic places and infrastructure (specifically the Harbour Bridge and Opera House) proposed as locations for spectacular stunts.

Site Overview:

The area in the SOPA precinct known as P5 (specifically parking area "C" at P5) is proposed as a green/blue screen filming area. This will facilitate the filming of all "simulated" sequences whereby action conducted safely on the ground is made to appear to occur in environments that are impossible or unsafe. This includes but is not limited to:

- A replication of the area at the top of the Sydney Harbour Bridge (est 5 days)
- Simulated fight sequence in a helicopter (est 3 days)
- Simulated fight sequences in a truck (exteriors and interiors est 3 days)
- Boat crash interiors (est 2 days)
- Harbour Bridge road landing (est 2-3 days)
- High stunt fall and other stunt montage sequences TBC (est 15 days total)

The area perimeter will bear a wall of containers (7 x high) that will support blue/green screen backgrounds. All structures will be certified by a structural engineer to ensure they adhere to appropriate construction methods and meet wind loadings.

Proposed Site Plan:

SYDNEY OLYMPIC PARK - P5 - PROPOSED SITE PLAN



Filming Location:

The proposed area for filming will accommodate HOD parking, lighting cranes, catering facilities, toilet blocks, truck parking, containers and site office/First Aid sheds in areas marked on the site plan. The filming area is to be contained within a security fence with security staff on site 24/7.

Production support vehicles and trailers will be moved onsite only for filming days.

The crew will arrive and leave in their private vehicles only on filming days. Other technical facilities will remain on site permanently during the filming period and these would be generators, demountable offices, toilet block, catering marquee and similar ancilliary structures. The area is to be remediated and returned to its original condition upon the completion of filming in the unlikely event of ground damage.

NB: unit vehicles and crew parking area off site.

Filming Dates:

Filming will be approximately 30 days (exact dates TBC) between 5th October, 2022 and be completed by Friday the 17th March, 2023

Proposed Daily Length of Shooting:

The number of shooting days is estimated to be 25-30. Each of the filming days are of 10 hours duration. There is preparation activity before filming and time also to “wrap” after shooting. Day filming will take place between 7am and 5pm while night filming would commence at 7pm and be completed by 5am.

Number of Persons:

There will be on average 200 technical crew on set during filming with 80 extras and 20 main cast and stunt actors.

Catering:

A catering area to be set up just prior to shoot in the existing carpark and the crew will walk to this area for meal breaks. Meal preparation may occur onsite but is more likely to be conducted offsite and meals delivered to the crew on location.

Temporary Structures:

In addition, there will be:

- A demountable toilet block.
- 1 x demountable office - essentially a site office with First Aid room
- 6 x storage containers (TBC)
- 4 x lighting cranes.
- 60 (estimated) x stacked, empty containers for a blue screen wall.
- 3 x 3 cubic meter waste skips.

Type of Filming Equipment:

- Camera equipment, camera and lighting cranes, camera track, sound recording equipment and stunt props.

Engineering:

The report from Event Engineering is provided as a separate attachment. The scope of work for the location could be similar to the structure used on “Pacific Rim” in the same location, so we are basing the current planning on containers as the support for ‘Blue Screen’. It is possible this may change to scaffold.

Vehicles:

Vehicles are proposed to be parked as indicated on the site map. The “unit” area (costume/makeup/catering and private vehicles) is proposed to be offsite.

The onsite film production vehicles are estimated to number:

- 15 x trucks
- 3 x artist trailers (TBC)
- 3 x Manitou all terrain forklifts
- 4 x 60’ knucklebooms
- 2-3 x portable trailer mounted generators (and fuel cells)

Disruption:

P5 “C” parking area is very private and far from residential areas. The main disruption will be the temporary unavailability of the parking itself. There will be no discharge of firearms, explosives or offensive noise, but there will be some hydraulic special effect actions on infrequent occasions. There will be significant stunt rehearsals which are quiet and repetitive by nature. The vast majority of the scenes involve dialogue and are of a quiet nature. Crew parking is proposed to be pre-paid 200 spaces per day in P5 “A”.

Visual Impact:

The filming will not have any material, adverse visual impact. It will involve low-key temporary structures on the site with limited visual exposure and blocked from public view by a fence with a continuous strip of storage materials from the adjacent worksite along the Hill Street fenceline.

Site Safety and Security:

Due to the high profile of the film, in coordination with SOPA, the production company will have security in place to secure the site during filming. Security presence will be 24/7. All points of entry to the set and support areas will be manned, and entry to the site will be by an accredited staff only. During filming, all potential points of entry will be monitored by roving security personnel. Filming in NSW takes place under industry guidelines and WHS procedures are monitored at all times by an on-site safety officer and unit nurse. This safety officer is required to visit all locations and provide a risk assessment. In co-ordination with the location manager and 1st Assistant Director, a Risk Assessment will be undertaken prior to filming and at a daily safety briefing the safety officer will identify hazards and identify exits and emergency assembly points. The safety report is provided as a separate attachment.

It is important to delineate the filming period from the setup/build and bump/exit periods. Both periods either side of actual filming are deemed construction periods with appropriate safety protocols for large vehicle operation and set construction at the start and then dissassembly, removal and remediation at the end.

Statement of Environmental Effects

All cranes/generators/machinery will carry spill kits as is SOP. All vehicles will be monitored for oil leaks. Generators will be refilled on site by a fuel truck. A toilet block will be installed by On-site or Kennards or similar accredited supplier who will also conduct periodic pumpouts. A demountable office will be installed by the same supplier TBC. Power will be provided by generators at all times.

Waste Management:

A waste management plan will be put in place that identifies materials coming to the site, their re-use or recycling onsite, and their eventual disposal. Main construction materials on site will be plywood, MDF, timber and steel. Paper and food waste will be placed in 3 cubic meter waste skips and removed regularly by a licensed recycling or disposal company. An appropriate number of portable toilets will be installed on site and regularly emptied and serviced by the contractor providing the facility.

CONSTRUCTION

For the container wall they will use approx 6 lengths or 20kg's of cardboard formatube filled with approx 400kgs of concrete mixed on site with bags and wheelbarrows to create footings for the containers to land on. These will go to landfill in the 3 cubic metre bins provide by Doyles. The container will be delivered at the start and removed at the end and are not expected to create any waste.

They will attach approx 1000 lineal metres 100 x 50 LVL timber to the containers using approx 450 ratchet straps. This works out to about 5 cubic metres of LVL. They estimate to waste less than 1% of the LVL's in the build process and will reuse all of the LVL's once dismantled. After that they will attach 540 sheets of 19mm yellow tongue structafloor to the LVL's. That equates to 30 cubic metres of structafloor. They estimate to waste less than 1% of the structafloor in the build process and attempt to sell for reuse 95% of the volume once dismantled. Rain can however damage the sheets and make their reuse less viable so worst case would see us disposing of all 30 cubic metres in 4x 15 cubic metre hook bins provide by Doyles.

The riggers will attach reusable fabric blue screens to cover the structafloor.

For the actual Harbour Bridge set they expect to use approx 4 tonnes of steel to recreate a section of the bridge. They will need to use approx 3 cubic metres of plywood to increase the size of the steel and allow 100 kgs of fast cast plaster rivets. (painted in harbour bridge paint - there is a special paint they use on the harbour bridge which is a particular colour and chemical formula which is very difficult to replicate but is available for purchase).

Once filmed they will recycle 100% of the steel in the structure. The plaster and plywood will be disposed of in 15 cubic metre bins by Doyles. They may need to lay down a road surface directly on the surface or we may need to lay a timber substrate and lay a road base on that to make removal easier.

The in house construction department will create the footings. At this stage it is expected that “Better Sets” will attach and remove the LVL’s and structafloor. They are communicating with Salken engineering on the production of the bridge set but it is still early days so we may find we find another contractor to produce and install the bridge set.

Please see attached Waste Management Table for construction phase.

Outdoor Lighting/Light Management:

For night filming, lights will be shuttered and there will be no lights directed at any nearby buildings. The lit area will be around the main set only, receding into darkness at the perimeter of the immediate filming area. The general lighting strategy for night filming is to create pools of light rather than saturate the area with

Energy:

The unit and production will be self- sufficient in terms of power with onsite generators and refillable fuel cells.

Local Authorities:

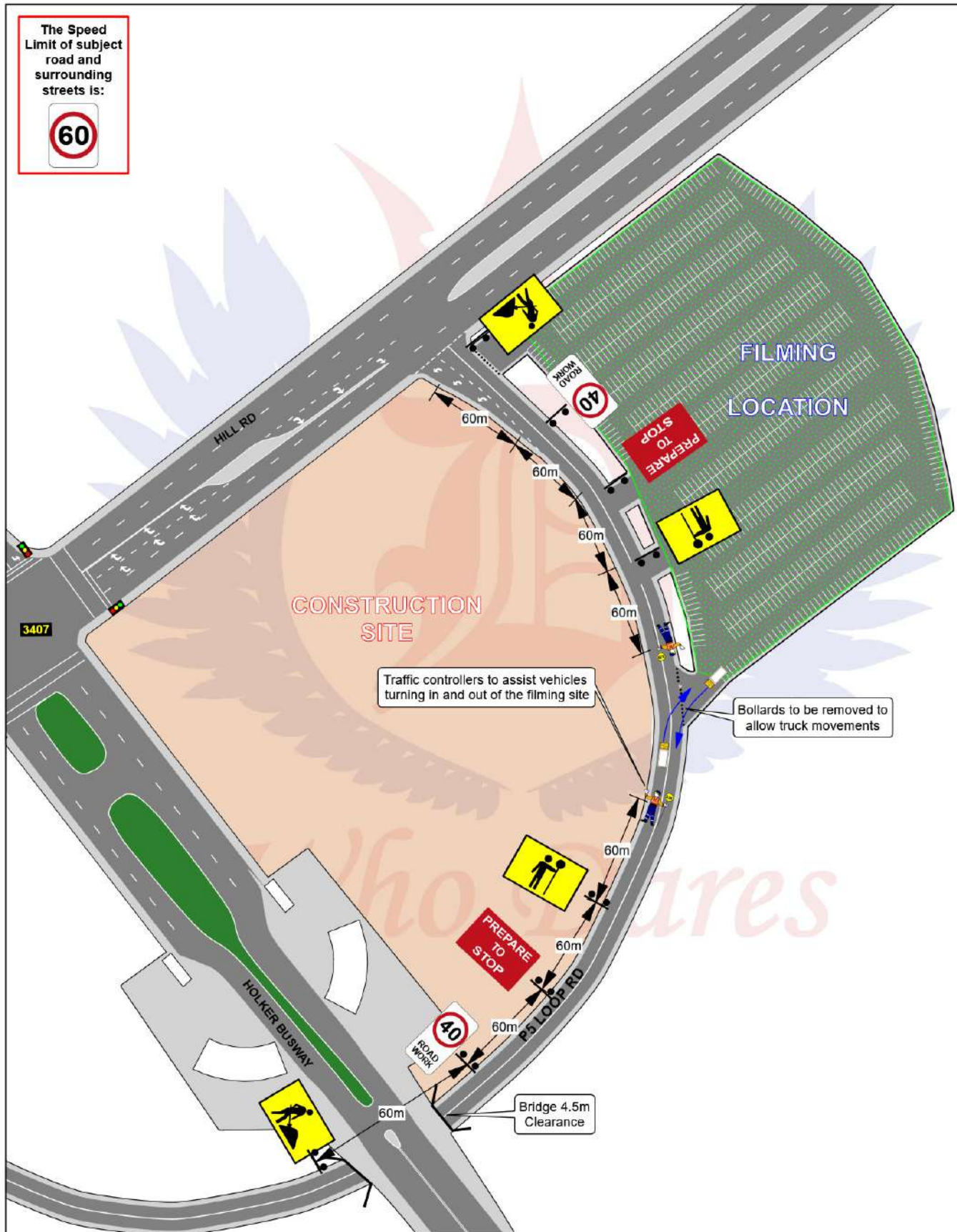
Local Police, Fire and Ambulance authorities will be notified of our filming and given regular updates.

Pyrotechnic:

There is no pyrotechnic activity currently scheduled however this possibility should not be discounted. There may be hydraulic special effects or gimbals employed to manipulate and tilt set pieces as required. Should the need for pyrotechnics arise the Special Effects department will provide simulated explosions for use in foreground . Larger background explosions will be CGI. For any smaller foreground simulated explosions, Special Effects will use dry fuel, (cork dust) this will eliminate any residual or uncontrolled burning. Any unburnt cork dust will fall to the ground and be swept up and disposed of. Special Effects will protect all surfaces we work on with rubber sheets or similar .

When they design a sequence with the Director and Stunt performers, we test all our pyrotechnic events offsite to determine safe distances for actors, stunt performers and film crew . The site will be locked down with safe zone perimeters and although the general public will see and hear these events , they will be well removed and very safe . The noise generated will be similar to small to medium fireworks , but for a much shorter duration.

The Speed Limit of subject road and surrounding streets is:



Location: P5 Loop Road, SOPA.

Date: To be confirmed.

Time of works: To be confirmed.

Client: K25 Productions

Project: 1X

Plan #: WD/P5LoopRd/1X/GA3458

Minimum Staff Required: 1x Team Leader +
1x Traffic Controller.

Details:

SHORT TERM WORKS

It is proposed to control traffic via Stop/Slow Traffic control to assist with trucks entering and exiting the site whilst filming a sequence of a Feature Film.

The plan shows traffic control positions and advance warning signage.

Maximum lockdown is THREE minutes.

Plan by: Glenn Armstrong Safe Work Cert. TC0026337
for Who Dares Pty Ltd Signature:



Who Dares Pty Ltd accepts no liability for the implementation or execution of this TGS unless undertaken by authorised Who Dares personnel.
ALL TRAFFIC PLANS ARE COPYRIGHT/PROPERTY OF WHO DARES PTY LTD AND ARE NOT TRANSFERABLE UNLESS AUTHORISED BY WHO DARES PTY LTD.

Traffic Management:

Traffic management will be implemented as required for heavy vehicle and/or container delivery during all phases of work by Who Dares Pty Ltd if and when required (Traffic Guidance Scheme attached). It is proposed that larger vehicles enter via the P5 Loop Road and enter the carpark at the south-west corner (bollards to be removed).

The Traffic Guidance Scheme is attached on the previous page.

Sound Management:

Noise generated will be minimal. There are no nearby residential areas. All generators are baffled (silenced) to facilitate the recording of sound. During the construction phase there would truck traffic, unloading of containers (during the day), drilling and occasional sawing. No more than the volume of noise generated by the construction site next door (Wave Pool) or above the traffic on Hill Road. During production days the noise levels would be less with the exception of occasional hydraulic special effects machinery and operation of telehandlers and forklifts.

Social and Economic Impact:

A Universal movie with international reach filming Sydney for Sydney will lead to an upgrade in skill and expertise for crew, stunt performers and actors, and benefit small businesses supplying material for the project. Local contractors will be used for roads, fencing and supporting facilities on site at Homebush. The production is expected to inject more than \$244 million into the Australian economy supporting local businesses as they continue to rebound from the pandemic. In addition, over 1000 Australian cast and crew and more than 3000 extras will be employed on the film between June of this year and March 2023.

Emergency Plan:

The site will be fenced, secured and manned with 24/7 security staff. It is proposed that emergency exits be created at:

- The south-west corner (large vehicle entry point)
- Exit boom gates (mid-point western side)
- Pedestrian/cycle path gate on eastern side (emergency assembly point)

NB: These emergency exit points are proposed only and to be approved by SOPA.

Restoration:

On completion of filming, all structures will be dismantled and materials, props and waste will be removed from site. Remediation work will be completed to SOPA's satisfaction.

Public Liability:

The certificate of currency is attached here.

Marsh Pty Ltd
ABN 86 004 651 512
727 Collins Street
MELBOURNE VIC 3008
GPO Box 1229
MELBOURNE VIC 3001
03 9603 2802 Fax 03 9670 8581
CHIN-YING.KONG@marsh.com
www.marsh.com.au

04 April 2022

Certificate of Currency

Public & Products Liability Insurance

This certificate is issued as a matter of information only and confers no rights upon the holder. It does not amend, extend or alter the coverage afforded by the policy/policies listed. It is provided as a summary only of the cover provided and is current only at the date of issue. For full particulars, reference must be made to the current policy wording.

Insured:	K25 Productions Pty Ltd
Layer:	Local policy Primary policy Excess policy
Policy Number(s):	Local: 71 2242094 GLR Primary: 7064497 Excess: 0032020981
Insurer(s):	Local: Zurich Australian Insurance Limited Primary: Zurich Insurance plc UK Branch Excess: American International Group UK Limited / AIG Europe S.A.
Period of Insurance:	Local: From 30 November, 2021 at 4.00pm Local Time To 30 November, 2022 at 4.00pm Local Time Primary and Excess: 01 December, 2021 to 30 November, 2022, Ending at midnight local standard time at the address of the Insured and any subsequent period for which Zurich accepts payment for the renewal of the Policy
Limit(s) of Liability:	Local: Public Liability \$9,277,500 any one occurrence, other than Claims for Pollution sudden & accidental. Product Liability \$9,277,500 any one occurrence and in the aggregate for all occurrences during the period of insurance. Pollution sudden & Accidental \$9,277,500 any one occurrence and in the aggregate for all occurrences during the period of insurance.

If this communication contains personal information we expect you to treat that information in accordance with the Australian Privacy Act 1988 (Cth) or equivalent. You must advise us if you cannot comply.

Primary and Excess:

Public Liability:

AUD 20,000,000 any one Occurrence

Products Liability:

AUD 20,000,000 any one Occurrence and in the Aggregate

Additional Information for Primary and Excess policies:

The currency of the original Primary and Excess policies is GBP. As requested, and for information purposes only, the limits and/or sums insured shown have been converted to AUD based on the following rate of exchange: GBP1.00 = AUD1.74704 as at 31 March 2022 from Oanda.com. Changes in rates of exchange will affect the values shown but have no bearing on the values and indemnity levels of the original policies.

We have placed the insurance which is the subject of this letter after consultation with the client and based upon the client's instructions only. Terms of coverage, including limits and deductibles, are based upon information furnished to us by the client, which information we have not independently verified.

This letter is issued as a matter of information only and confers no right upon you other than those provided by the policy. This letter does not amend, extend or alter the coverage afforded by the policies described herein. Notwithstanding any requirement, term or condition of any contract or other document with respect to which this letter may be issued or pertain, the insurance afforded by the policy (policies) described herein is subject to all terms, conditions, limitations, exclusions and cancellation provisions and may also be subject to warranties. Limits shown may have been reduced by paid claims.

We express no view and assume no liability with respect to the solvency or future ability to pay of any of the insurance companies which have issued the insurance(s).

We assume no obligation to advise yourselves of any developments regarding the insurance(s) subsequent to the date hereof. This letter is given on the condition that you forever waive any liability against us based upon the placement of the insurance(s) and/or the statements made herein with the exception only of wilful default, recklessness or fraud.

This letter may not be reproduced by you or used for any other purpose without our prior written consent.

This letter shall be governed by and shall be construed in accordance with English law.

Yours faithfully

A handwritten signature in blue ink, appearing to read 'A. J. Watson', is written over a circular blue ink stamp. The stamp contains the text 'MARSH LTD' in a circular arrangement.

Marsh Ltd